

30.8.74

Calibration Certificate

Wild Lens Cone / Camera

No. 30.8.74 411 30 At. II N° 4110

Type: RC 10

Lens Cone / Camera

Type: RC 1
 No.: 30 At. II 411
 Format: 9" x 9"

Lens Calibration date: 30.8.74

Type: 30 AVICSTAR II *Not des n° de l'axe*
 No.: 4110
~~X/X~~ P.D. (850 m) = 305.36 mm
 max. aperture: f/4.0

Resolving Power (Lines per millimeter)

High contrast and max. aperture f/4.0

Film: Agfapan 25 Professional
 Glass plate:

	0°	5°	10°	15°	20°	25°	30°	35°	40°	45°	50°	55°	60°
rad.	95	106	66	26	25	25							
tang.	35	31	51	41	30	28							

rad.													
tang.													

Distortion in millimeters

The given distortion is the arithmetic mean of the four semi-diagonals. Positive values denote image displacement away from center.

Goniometer measurements made with no filter on Lens Cone / Camera.

Calibrated focal length: ~~305.36 mm~~ Distance (850 m): 305.36 mm

Radius	20	40	60	80	100	120	140	148
Distortion	-0.002	-0.003	-0.001	+0.003	+0.005	+0.001	-0.001	+0.003

The displacement of the principal point of autocollimation from the intersection of the diagonals (fiducial center) is within 0.01 mm.

Date of Dispatch: 13.9.74

WILD HEERBRUGG LTD

Jim.

Lens Cone/Camera

Lens

Calibration date: 30.8.74

Type: RC 10

Type: 30 AVIOTAR II

Format: 9" x 9"

No.: 4110

f = mm

Coordinates (Origin: Fiducial Center) of

P.D. (850) = 305.36 mm

Point of best Symmetry (S):

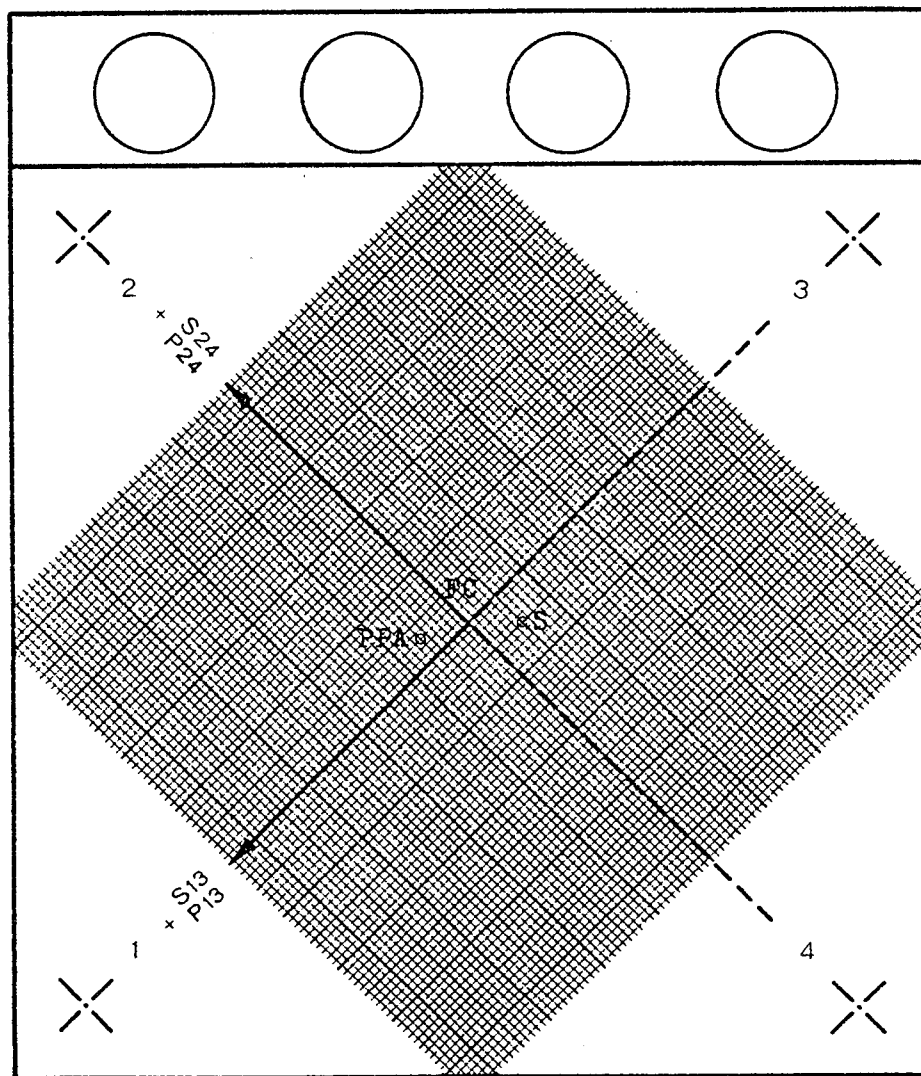
S13 = -5 μm S24 = -5 μm

Principal Point of Autocollimation (PPA):

P13 = +6 μm P24 = +3 μm

(Calibration without filter)

(Seen on Focal Plane Frame)



SCALE: 1000:1

Distances between Fiducial Marks in mm:

1 - 2 = 211.994

1 - 3 = 299.805

2 - 3 = 211.998

2 - 4 = 299.804

3 - 4 = 211.991

4 - 1 = 211.994

WILD HEERBRUGG LTD

Jam.

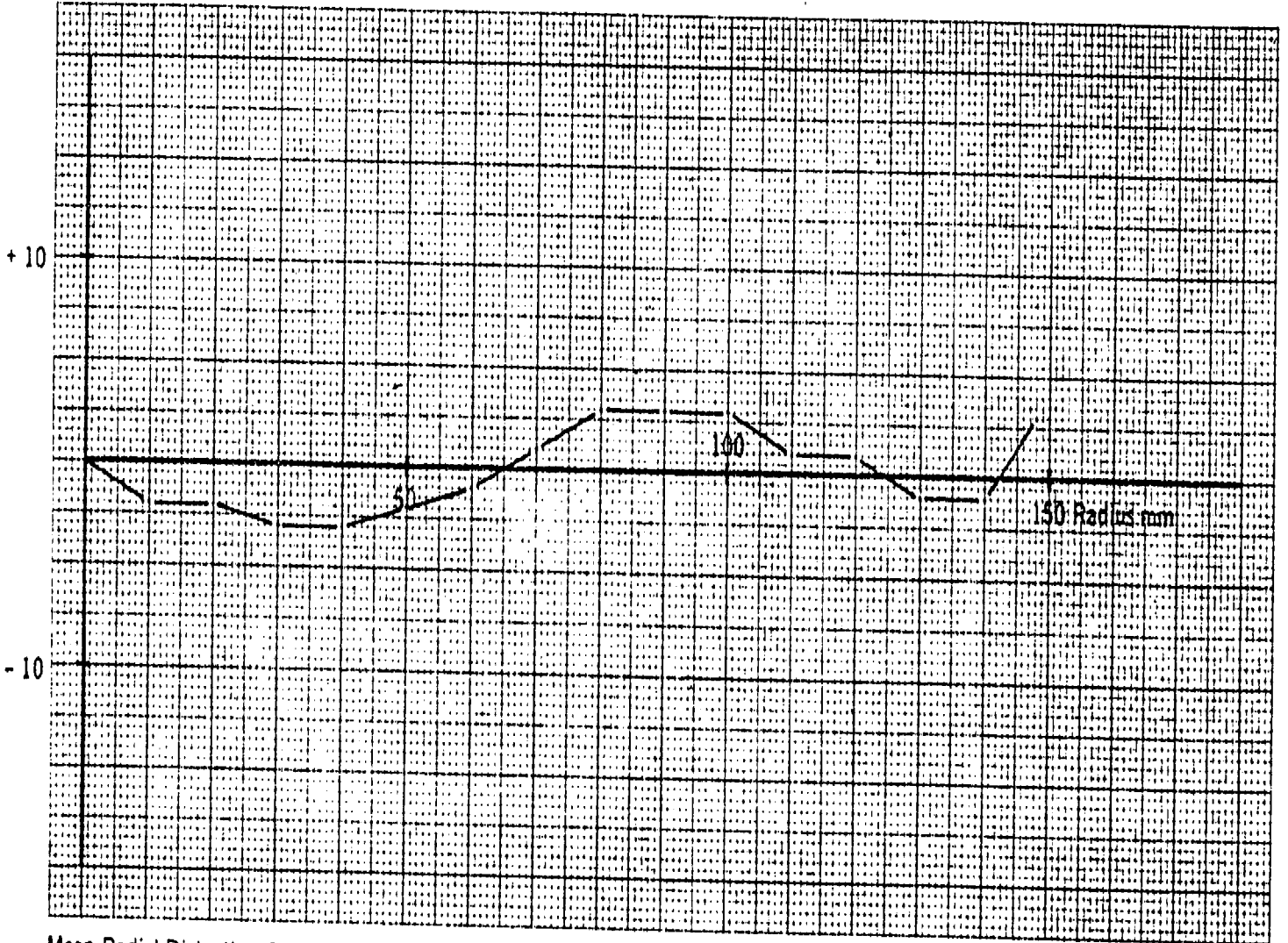
WILD RC10

AVIOTAR II

Lens Cone 9" x 9"

30 At. II 4110 PD.(850m)= 305.36 mm

Distortion μm



Mean Radial Distortion Curve

WILD HEERBRUGG LTD

30.8.74 Jim.

Sep 15 1992

16:24:49

D I O - Program : Calibration Data
Camera : ca411074

=====

Calibration Date 30.08.74
Principal Distance 305.360
Coordinate Origin FC, xps=-0.005 yps=-0.005
Measurement of Fiducial Marks directly

Distances between Fiducial Marks (mm)

FM-Distance 12 = 211.994 (mm)
FM-Distance 23 = 211.998 (mm)
FM-Distance 34 = 211.991 (mm)
FM-Distance 41 = 211.994 (mm)
FM-Distance 13 = 299.805 (mm)
FM-Distance 24 = 299.804 (mm)

Mean Square Error (mm) of computed FM-Coord.: 0.000
Computed Fiducial Marks (mm), Origin PS :

1	106.004	-105.990
2	-105.989	-105.994
3	-105.991	106.004
4	106.000	106.004

Photo Limits (mm) :

x-lower left : -115.000
y-lower left : -115.000
x-upper right: 115.000
y-upper right: 115.000

Distortion Values :

Number of Distortion Values per semi-diagonal 15
Interval along semi-diagonal (mm) 10.0
Number of semi-diagonals 1

Distortion Values (microns), Origin PS

R(mm)	10	20	30	40	50	60	70	80	90	100	110	120	130	140	150
SD 1:	-2	-2	-3	-3	-2	-1	1	3	3	3	1	1	-1	-1	4