

Product variants – Swiss Map Raster (SMR)

Available scales

1:10 000:	Swiss Map Raster 10	1:200 000:	Swiss Map Raster 200
1:25 000:	Swiss Map Raster 25	1:500 000:	Swiss Map Raster 500
1:50 000:	Swiss Map Raster 50	1:1 million:	Swiss Map Raster 1000
1:100 000:	Swiss Map Raster 100		

Colour combination with shading (KREL)

Example: Swiss Map Raster 25



- Resolution: 508dpi (20L/mm)
- Colour modes: RGB
- Antialiasing: yes
- Format: GeoTIFF

Colour combination without shading (KOMB)

Example: Swiss Map Raster 25

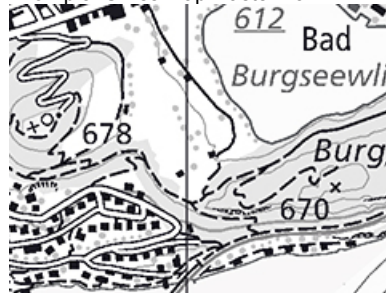


- Resolution: 508dpi (20L/mm)
- Colour modes: indexed colour
- Antialiasing: no
- Format: GeoTIFF

Not available for Swiss Map Raster 10

Greyscale combination without shading (KGRS)

Example: Swiss Map Raster 25



- Resolution: 508dpi (20L/mm)
- Colour modes: indexed colour
- Antialiasing: no
- Format: GeoTIFF

Swiss Map Raster 10 contains shading

Thematic separations (EE)

Example: Swiss Map Raster 25; Layer Buildings



- Resolution: 508dpi (20L/mm)
- Colour modes: bitmap
- Antialiasing: no
- Format: TIFF
- Georeferencing: TFW-File

Orderable for all maps except the Swiss Map Raster 10 directly from geodata@swisstopo.ch (service subject to a charge).

Service subject to a charge: For special purposes (e.g. reprints of maps), high-resolution data (50 L/mm) of all product variants can be delivered on order (geodata@swisstopo.ch).