

24.1.85

CAMERA CALIBRATION CERTIFICATE

Letak Kalibrasi

CAMERA TYPE : RC10
LENS TYPE : 15/4 UAG
LENS NO. : 13018

CALIBRATION DATE : 24.01.85

WILD HEERBRUGG LTD



CAMERA: RC10 LENS: 15/4 UAG NO.: 13018 CALIBRATION DATE: 24.01.85

APERTURE : F / 4.0
FILTER ON GONIOMETER : VIS (400 - 700 NM)
FILTER ON CAMERA : --
CALIBRATED FOCAL LENGTH : 153.37 MM

RADIAL DISTORTION (MICROMETERS)

REFERRED TO PRINCIPAL POINT OF SYMMETRY (PPS)
(POSITIVE VALUES DENOTE IMAGE DISPLACEMENT AWAY FROM CENTER)

RADIUS MM	SEMI - DIAGONALS				MEAN
	1	3	2	4	
10	1.0	0.0	0.6	0.0	0.4
20	1.2	-0.2	1.1	0.1	0.5
30	0.7	0.3	1.1	0.1	0.5
40	0.7	0.3	0.7	0.3	0.5
50	0.9	-0.1	0.9	0.2	0.4
60	0.2	0.3	1.2	0.1	0.4
70	0.5	0.7	0.3	0.7	0.5
80	-0.1	1.4	0.5	1.4	0.8
90	1.0	1.8	0.7	1.5	1.2
100	0.1	1.9	0.8	1.8	1.1
110	-0.3	1.6	0.0	2.1	0.8
120	-0.3	0.4	-0.6	1.0	0.1
130	-1.4	-1.0	-0.7	-0.3	-0.8
140	-1.7	-2.5	-0.8	-2.0	-1.7
148	-0.8	-3.9	0.0	-2.9	-1.9

PHOTOGRAPHIC RESOLUTION (LINE PAIRS PER MILLIMETER)

INTERNATIONAL 3-LINE TEST-CHART, CONTRAST (LOG) : 2.0
APERTURE : 4.0
FILTER : 450 NM
FILM : AGFAPAN 25 PROFESSIONAL (ASA SPEED: 25)
DEVELOPER : AGFA-GEVAERT STUDIONAL LIQUID 1:15 6 MIN

ANGLE: (DEGREES)	0	5	10	15	20	25	30	35	40	45
RAD.	67	67	83	81	79	76	73	77	57	38
TANG.	67	67	65	62	59	69	63	71	55	33

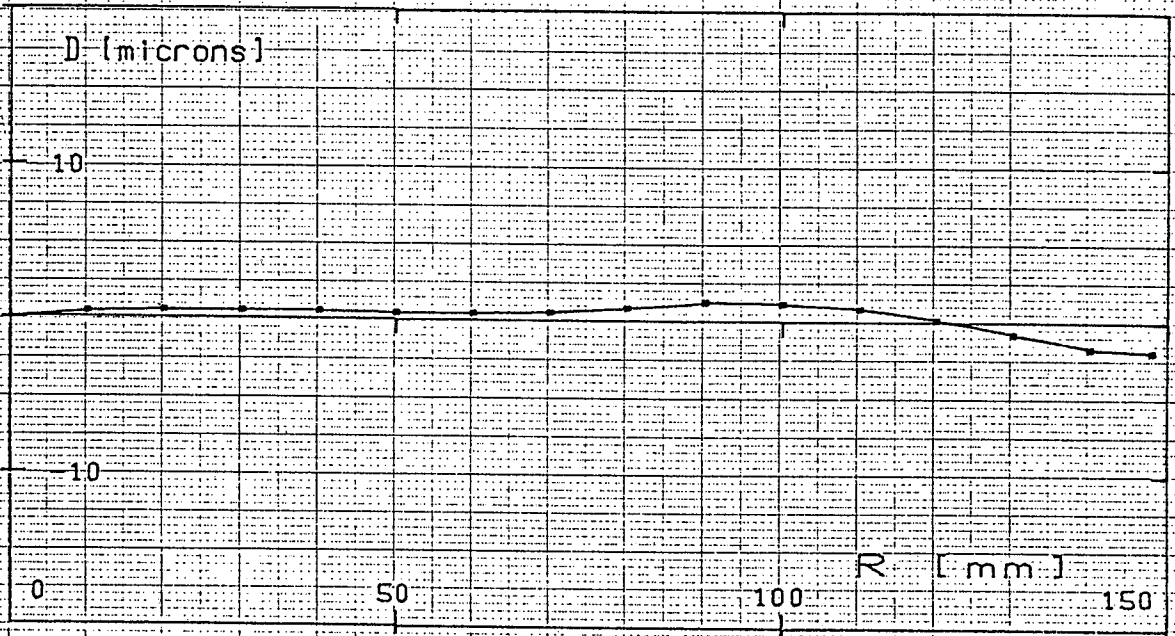
AWAR (AREA WEIGHTED AVERAGE RESOLUTION) IN LP/MM : 68

St.

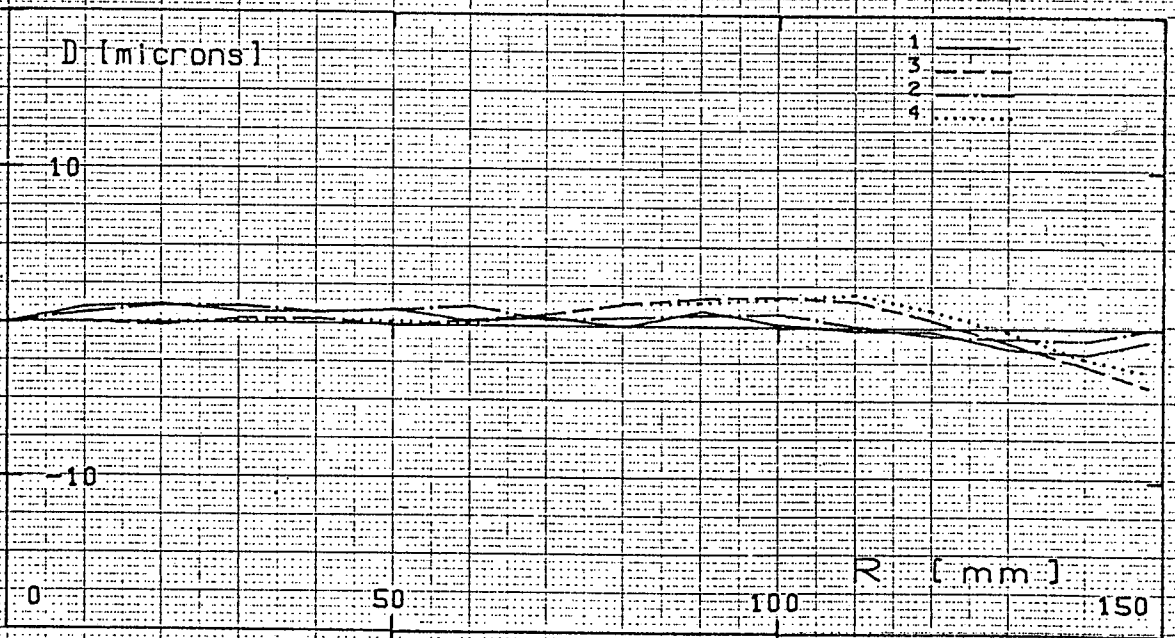
RC10 1574 UAG NO. 13018

24.01.85

APERTURE : F / 4.0
FILTER ON GONIOMETER : VIS (400 - 700 NM)
FILTER ON CAMERA : --
C.F.L. : 153.37 MM



MEAN RADIAL DISTORTION CURVE



RADIAL DISTORTION FOR SEMI-DIAGONALS REFERRED TO PPS



CAMERA: RC10 LENS: 15/4 UAG NO.: 13018 CALIBRATION DATE: 24.01.85

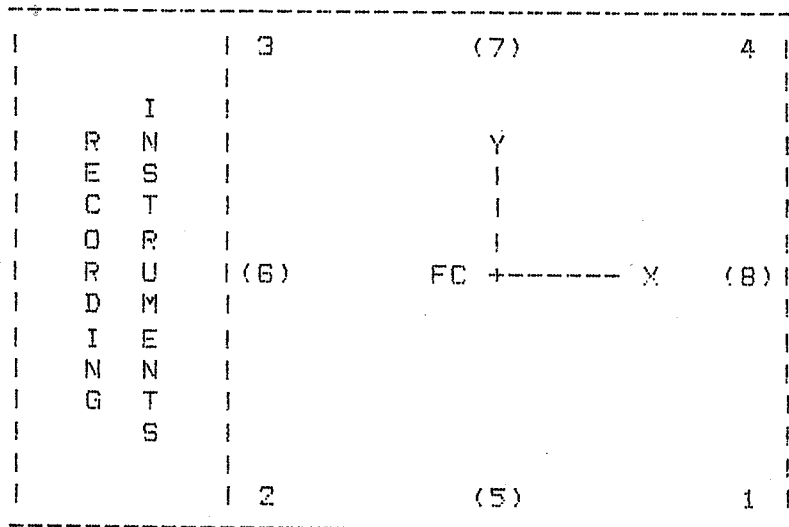
PRINCIPAL POINT OF AUTOCOLLIMATION (PPA) AND
 PRINCIPAL POINT OF SYMMETRY (PPS)

REFERRED TO FC, SEE DIAGRAM

	X (MM)	Y (MM)
PPA	0.008	0.001
SPS	0.001	-0.002

TRIDUCIAL MARKS, REFERRED TO FC

	X (MM)	Y (MM)
1	105.999	-105.998
2	-106.000	-105.999
3	-106.003	106.002
4	106.001	106.000



AS SEEN ON FOCAL PLANE FRAME

Handwritten mark