



OneMap Myanmar: Spatial data for empowerment

Co-producing data and knowledge through transformative partnerships for
evidence-informed and equitable land governance

Swisstopo 23th March 2018
Andreas Heinimann, Joan Bastide



Schweizerische Eidgenossenschaft
Confédération suisse
Confederazione Svizzera
Confederaziun svizra

Swiss Agency for Development
and Cooperation SDC

u^b

UNIVERSITÄT
BERN

CDE
CENTRE FOR DEVELOPMENT
AND ENVIRONMENT



In agricultural and natural resources based economies, land puts many, and often competing, interests at stake



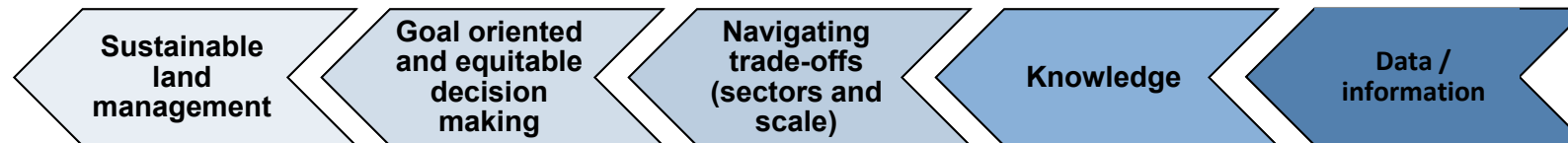
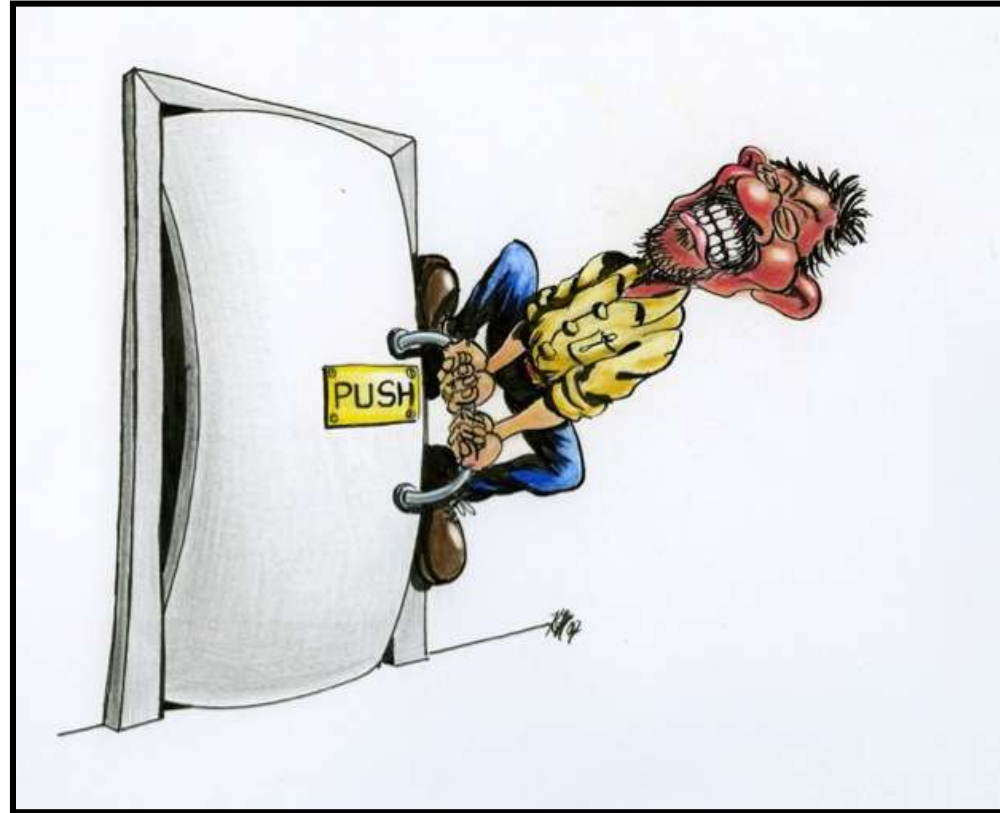
In Myanmar, the situation remains highly conflictual, and the level of trust between key stakeholders is very low



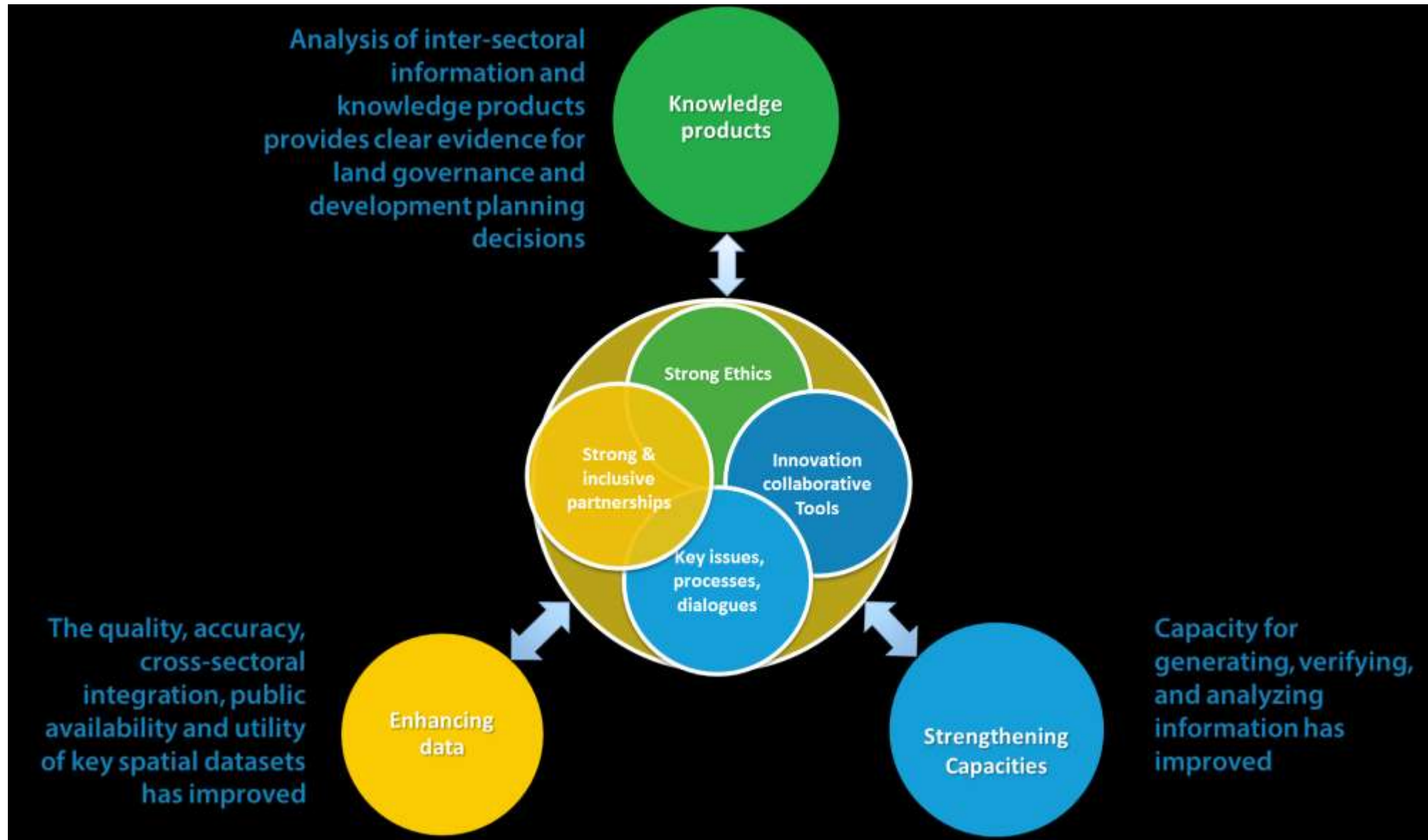
One source of data is not enough



But data and information alone is not enough



Co-production



Example of activities: The case of palm oil in the southern region of Tanintharyi

Enabling an evidence-informed multi-stakeholder environment to address complex land issues

The case of Palm Oil in Tanintharyi



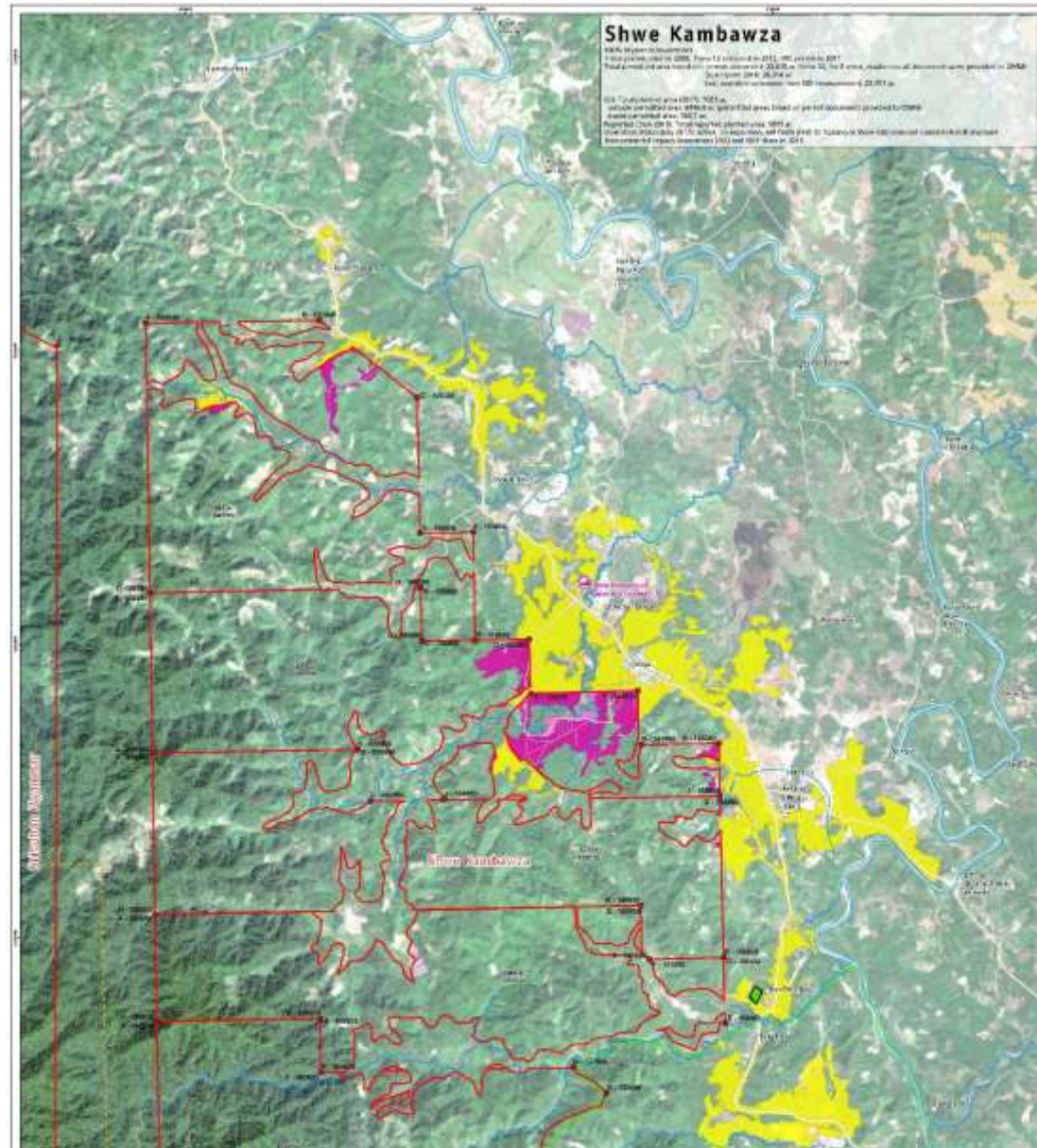


တနင်္သာရီတိုင်းဒေသကြီး၊ မီးဘုန်းကမ္ဘာ့ဆေး ဆန်းစစ်ရေးကော်မရှင်အဖွဲ့အစည်းတော်မှ
မီးဘုန်းကမ္ဘာ့ဆေးဆန်းစစ်မှုရပ်ဝန်းအစီအစဉ်များ ဖြန့်ချိခြင်းဆိုင်ရာ
တိုင်းဒေသကြီးအဆင့် အစီအစဉ်ဆွဲဆောင်ပွဲ
‘Tanintharyi Regional Oil Palm Assessment Action Planning Workshop’
၂၀၁၇ ခုနှစ်၊ ဩဂုတ်လ (၁၅-၁၆) ရက်
15-16 Aug, 2017
မြို့တော်ခရီး၊ ထောင့်မိမြို့
City Hall, Dawei

u^b
UNIVERSITÄT
DUISBURG
ESSEN
CENTRE FOR DEVELOPMENT
AND ENVIRONMENT

[illegible]

Mapping of planted areas using satellite images (Visual based on PL)



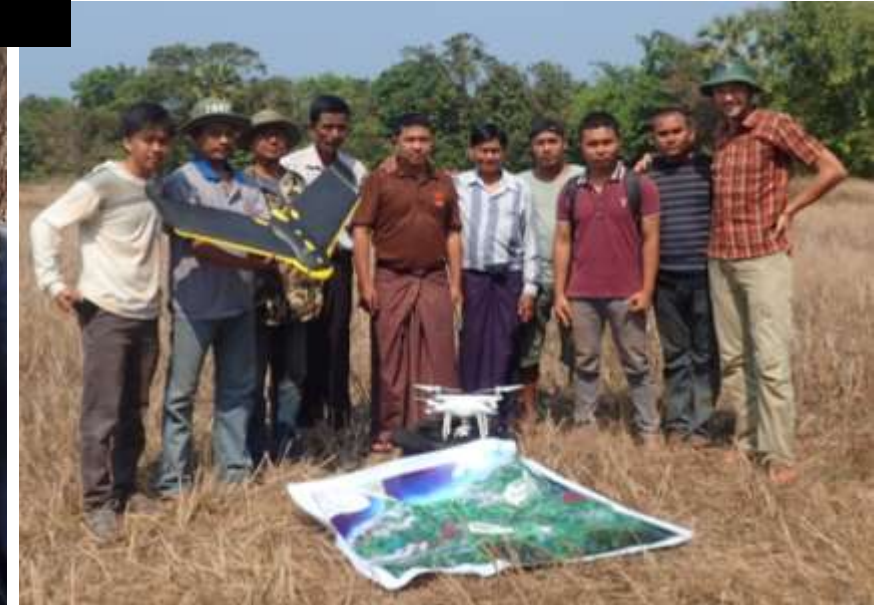


Planted OP, Sat-Imagery



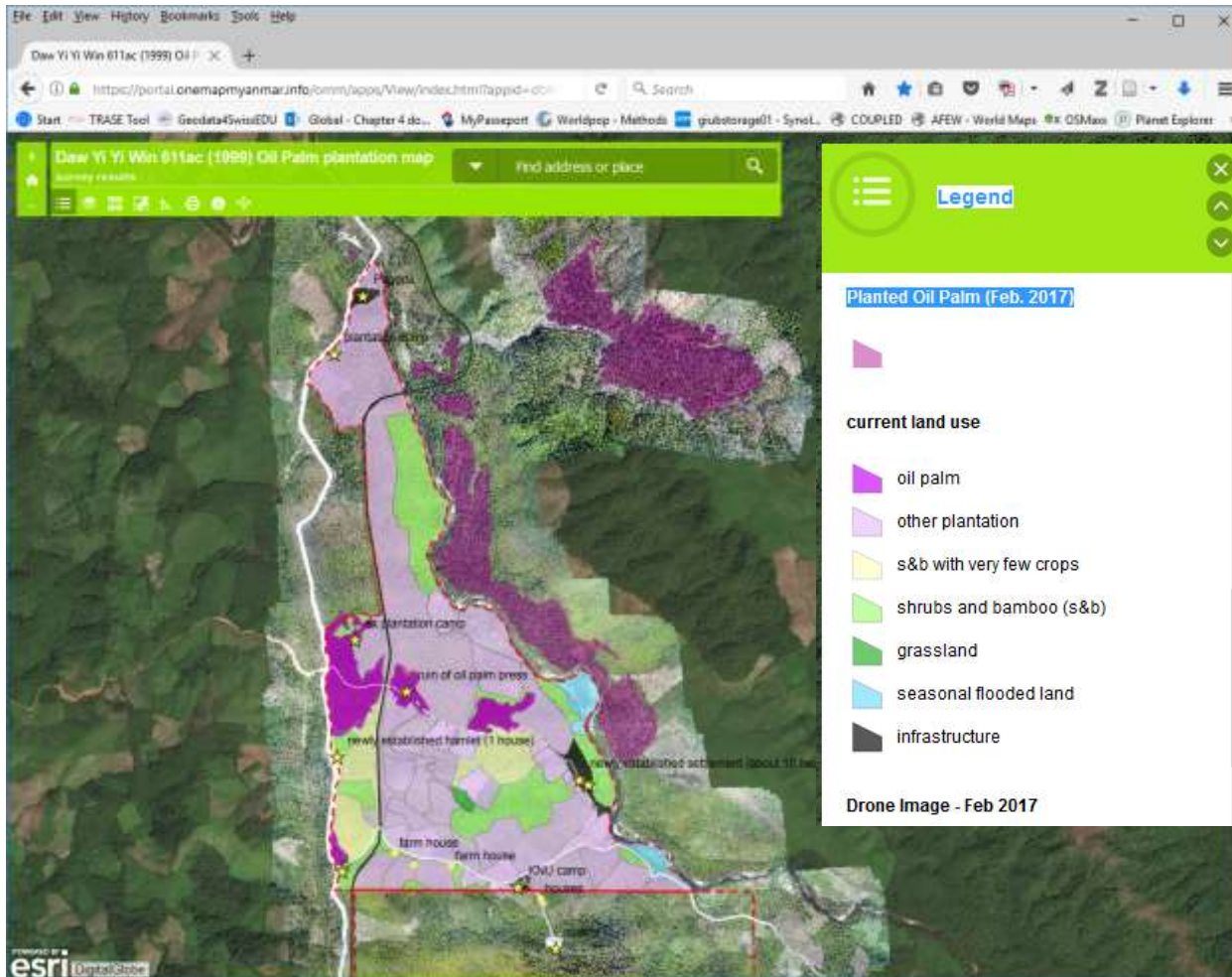
Planted OP, maybe overgrown area Sat-Imagery

Co-production using technical means

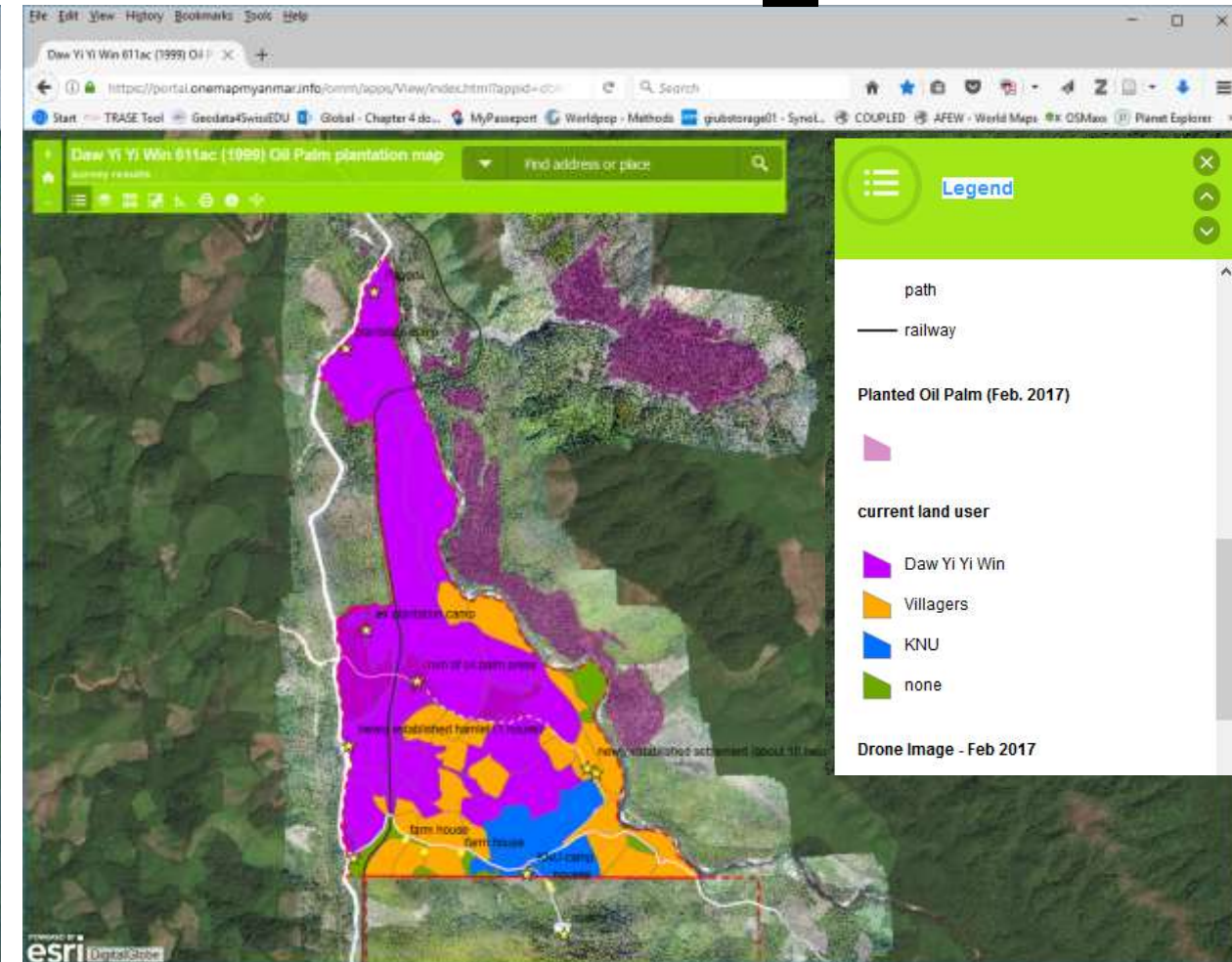


Co-production of land use and claims towards navigating conflicts and finding solutions

Current land use



Current land users



[Link to interactive WebApp](#)

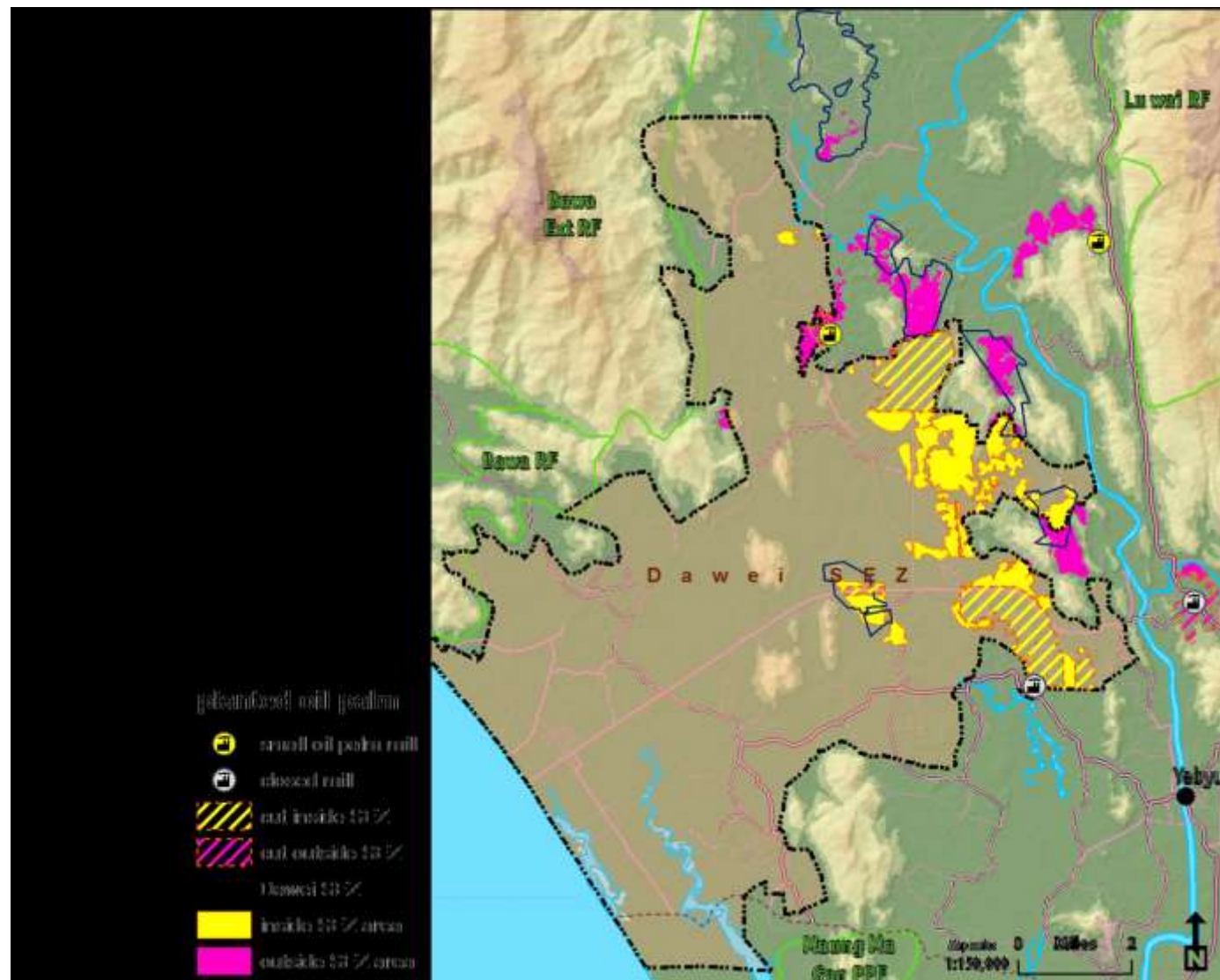
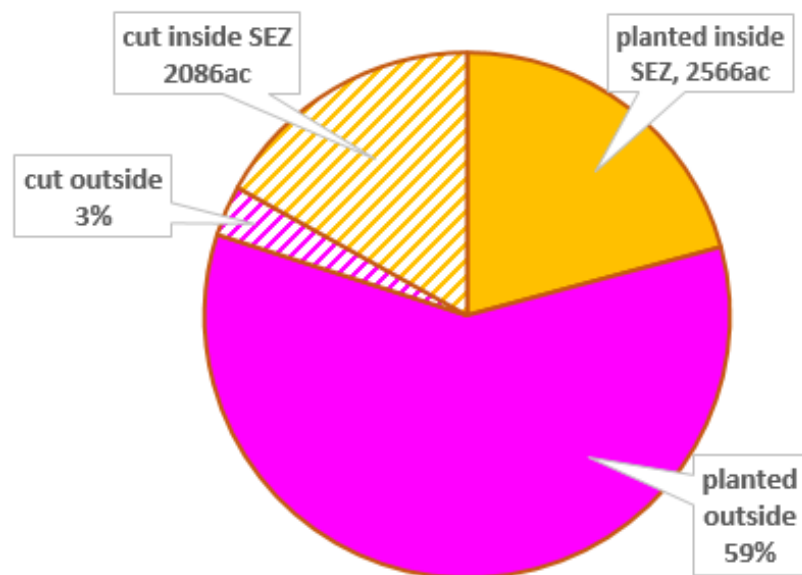


Planted or not?





Dawei Special Economic Zone and planted/cut Oil Palm



From mapping to policy processes and land redistribution to villages



Example of activities: Putting shifting cultivation and customary land claims “on the map”

Putting shifting cultivation and customary land claims “on the map”



Participatory mapping and documentation of customary lands in Nagaland



Nagaland



Land Use Types



Land Use Types



The photograph shows a lush, green mountainous landscape. In the foreground, there are green crops, likely corn, growing in a field. A small, thatched-roof hut is visible on a hillside. The background features steep, forested mountains with some clouds. The labels point to specific features: 'Bee rock' points to a rocky outcrop on a distant peak; 'Fallows' points to a cleared area on a slope; 'Customary forest' points to a large, dense forested area; 'Orchard' points to a cultivated area on a slope; 'Terrace' points to a stepped agricultural area; and 'Shifting cultivation plot' points to a field with crops in the foreground.

Bee rock

Fallows

Customary forest

Orchard

Terrace

Shifting cultivation plot

Land Use Types



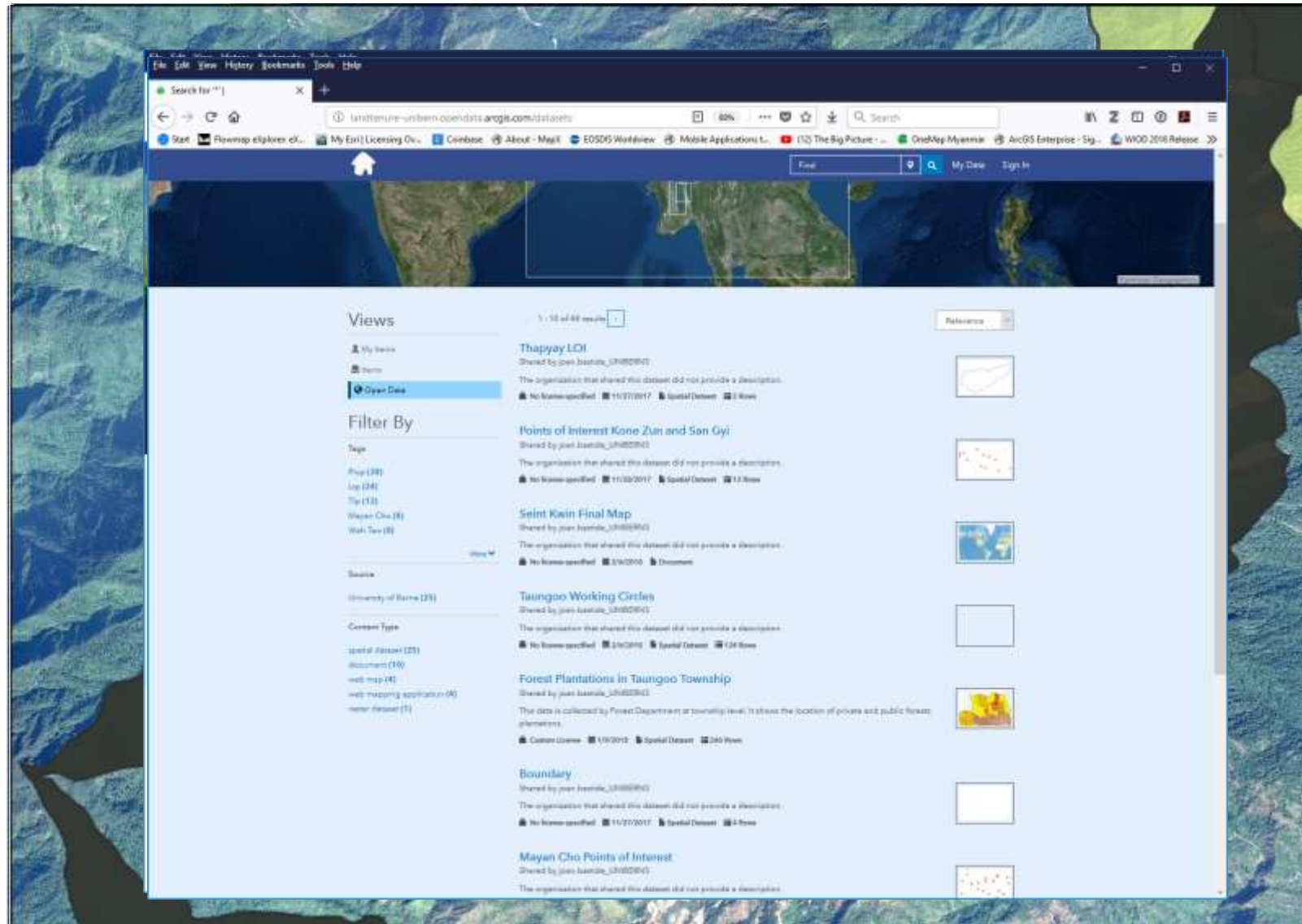
Participatory mapping of: Current land use and land tenure



Participatory mapping of: Current land use and land tenure

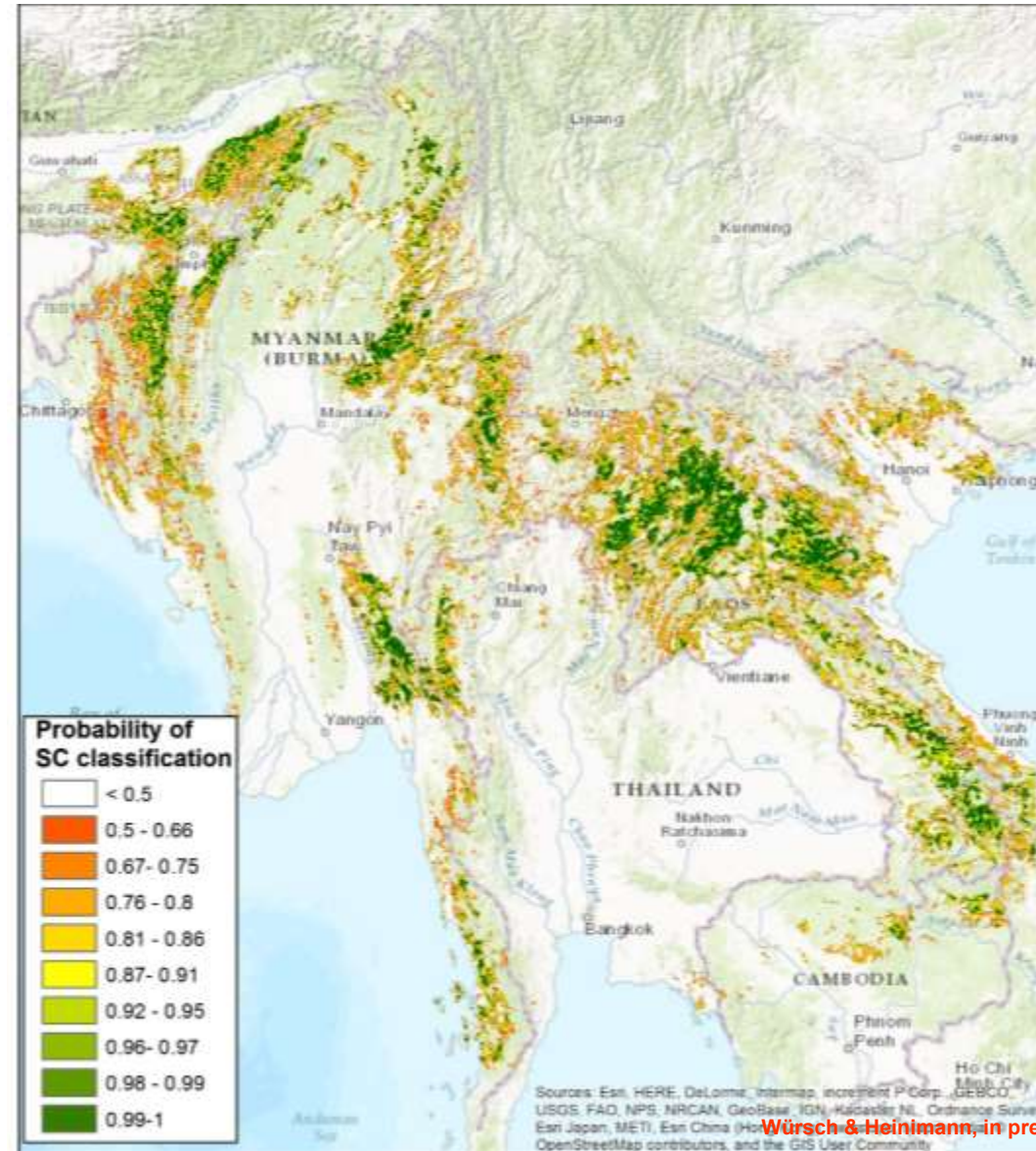


Participatory mapping of: Current land use and land tenure



[Link to interactive Storymap](#)

Regional shifting cultivation probability map (using Google Earth Engine)



Example of activities: Putting shifting cultivation and customary land claims “on the map”

Putting shifting cultivation and customary land claims “on the map”



Thank you



www.facebook.com/OneMapMyanmar/
www.onemapmyanmar.info (soon public)



Schweizerische Eidgenossenschaft
Confédération suisse
Confederazione Svizzera
Confederaziun svizra

Swiss Agency for Development
and Cooperation SDC

u^b

^b
UNIVERSITÄT
BERN

CDE
CENTRE FOR DEVELOPMENT
AND ENVIRONMENT



Co-production of knowledge: Putting shifting cultivation on the map

Support communities documenting their land resources (aim n> 70)



Understand local contexts through case studies and engagement with Local communities

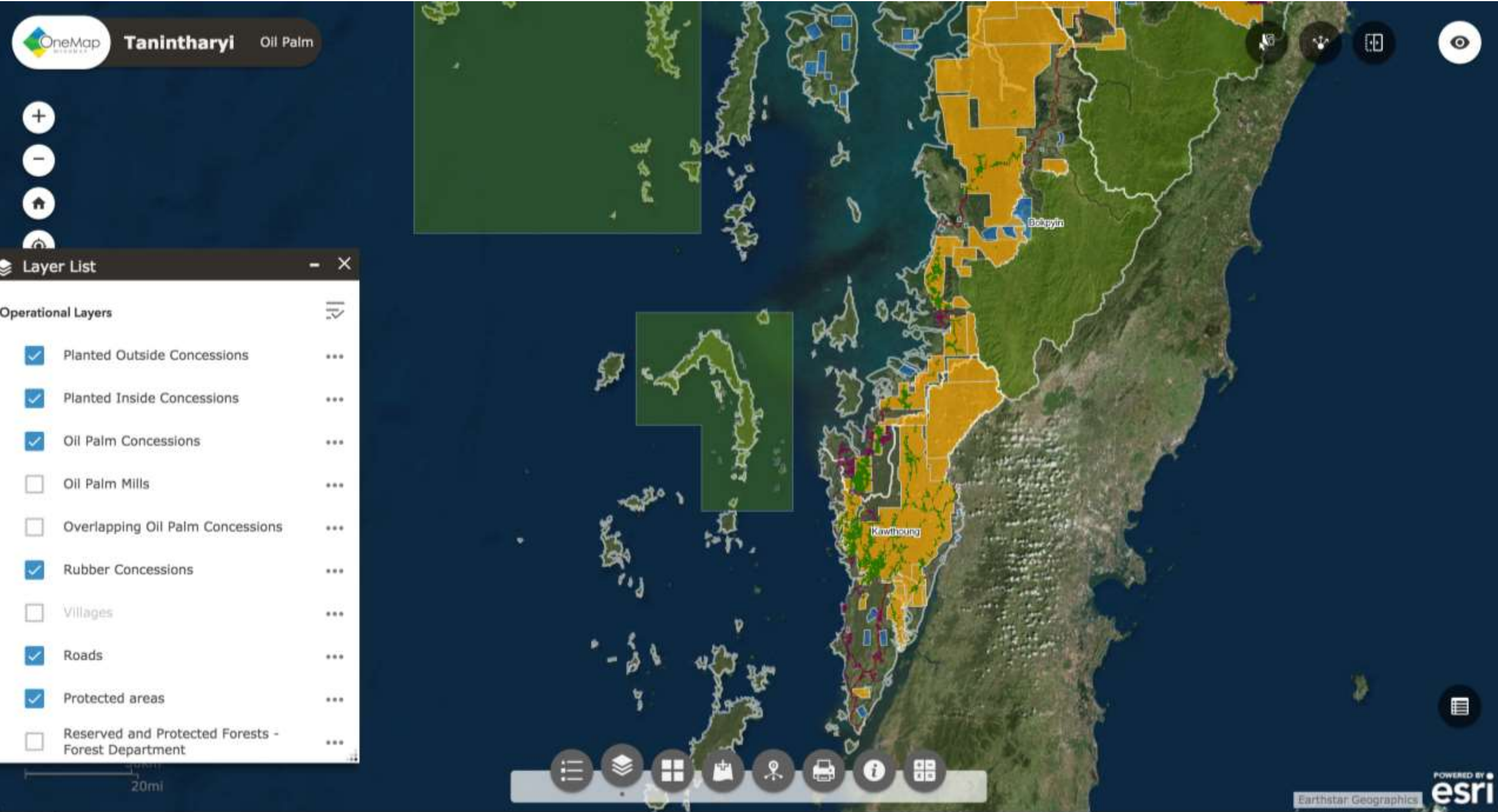
Strategically work with policy makers at all levels to alter policies and zonings



Work with technical staff in gvt



Use new technologies to put SC on the map



[Link to interactive WebApp](#)

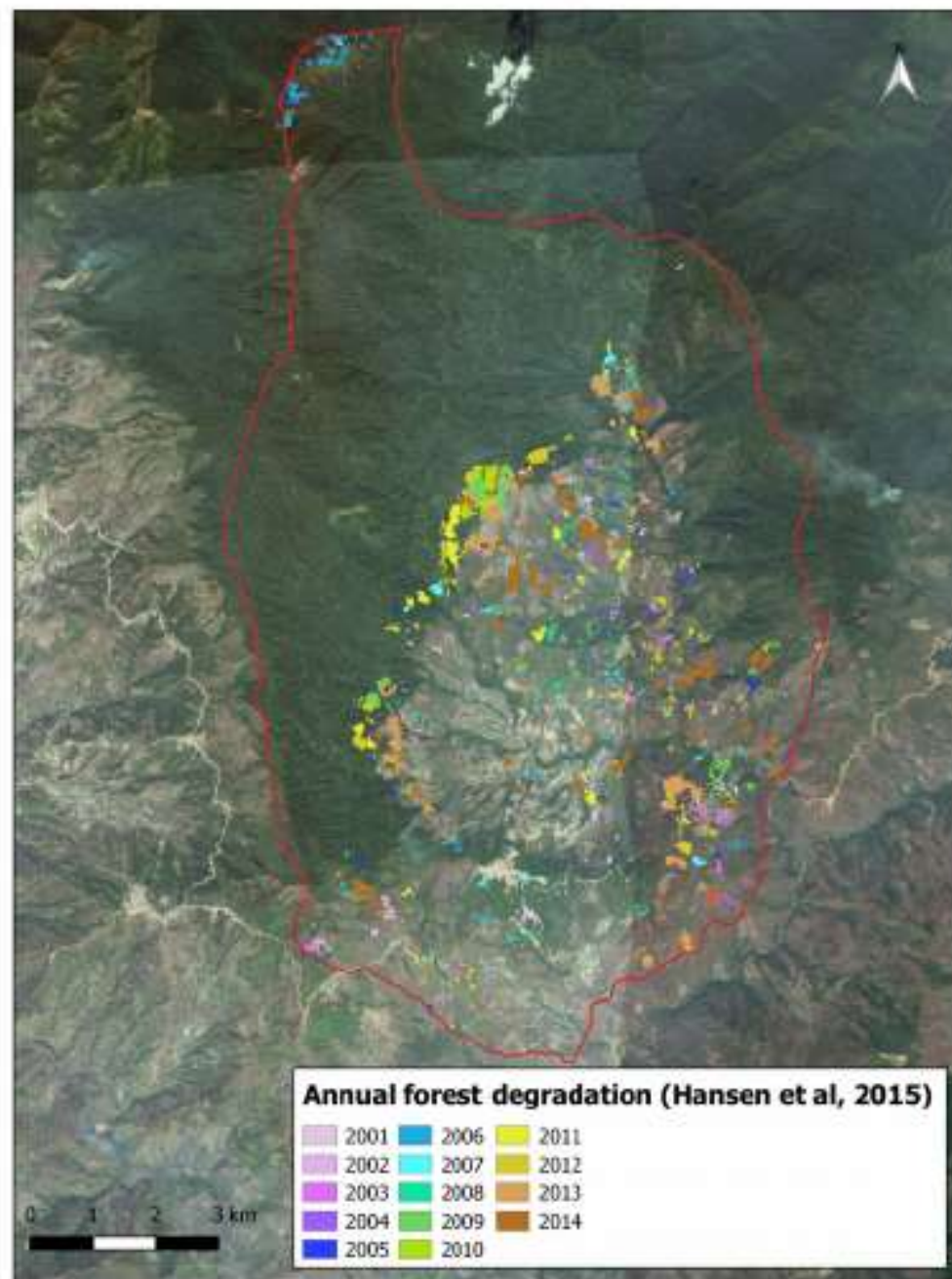


Image © 2017 DigitalGlobe

Potentially OP but maybe coconut

Google Earth

Kuki Village Map, Lashi Township



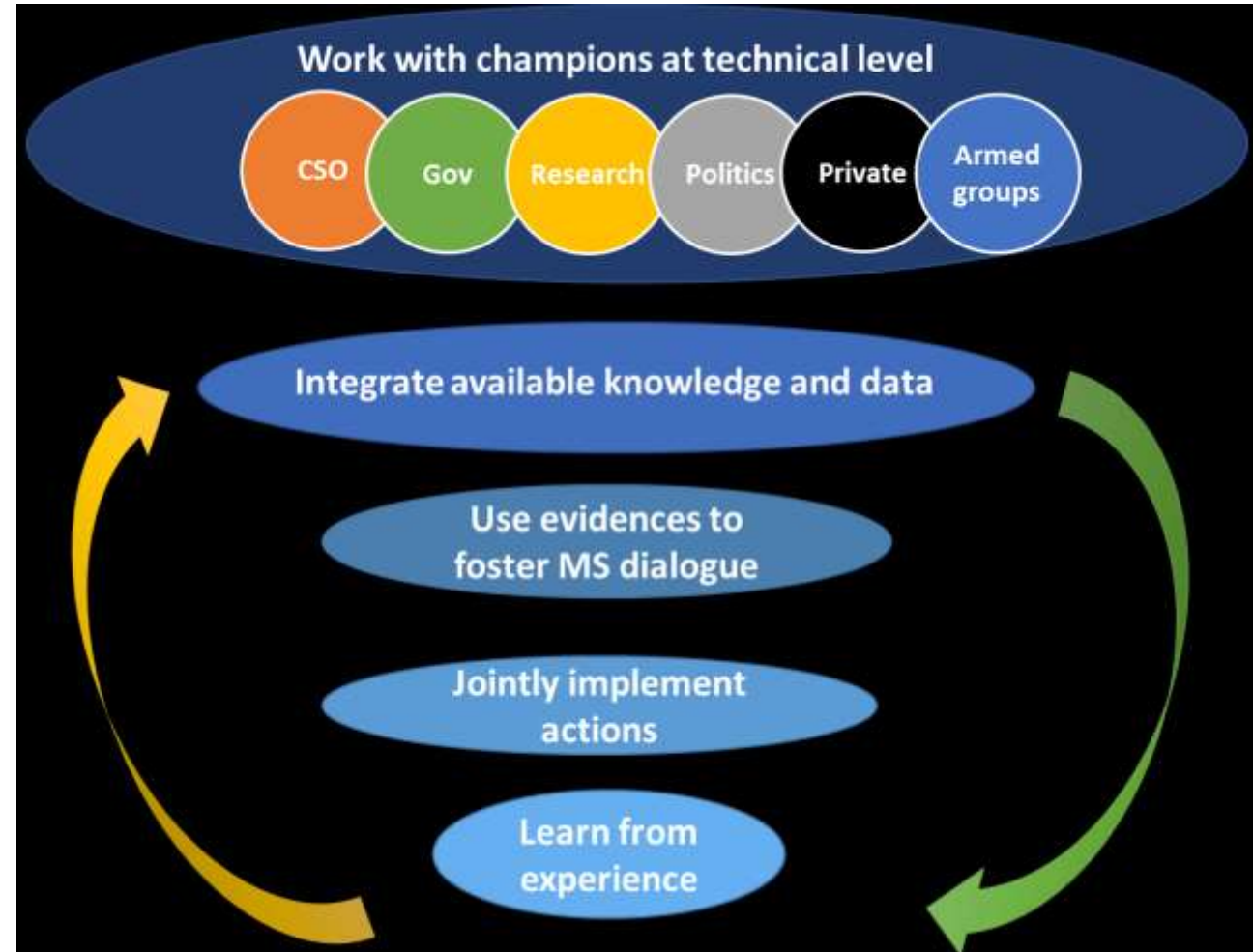
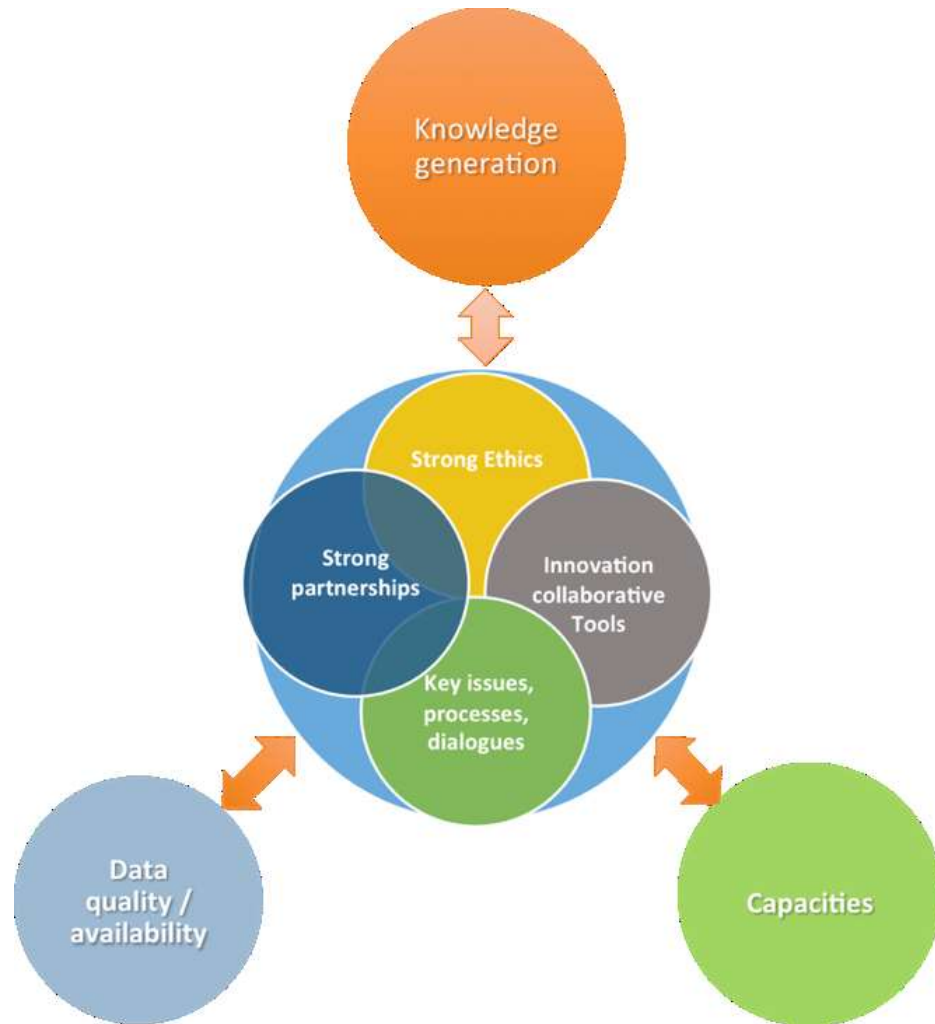
Basel data outside government structures: Crowd sourcing through OpenStreetMap



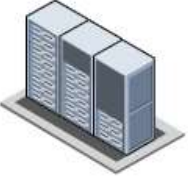
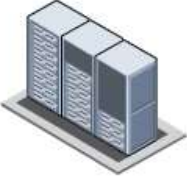


















OneMap(s)? An constellation of interlinked tools, modules, platforms and processes



OneMap(s)? An constellation of interlinked tools, modules, platforms and processes



Infrastructure to Application Mapping (OneMap Myanmar)

Datacenter Location	 <p>CDE Datacenter Bern</p>	 <p>OneMap Datacenter Nay Pyi Taw</p>	 <p>ESRI Cloud Datacenter</p>	 <p>OneMap Yangon</p>	 <p>Survey Dep. MM</p>	   <p>Hostpoint (CH) 101domain (US) Datacenter Myanmar</p>
Infrastructure						
Servers						
Applications and Services	<p>CDE Datacenter Bern</p> <p>ESRI Web Applications Web proxy: cdeommweb https://portal.onemapmyanmar.info/omm/home/ https://ommportal.cde.unibe.ch/onemap/home/ https://tanintharyi.onemapmyanmar.info/oilpalm/ https://tanintharyi.onemapmyanmar.info/viewer/ https://myitsonedam.onemapmyanmar.info/viewer/ https://gis.onemapmyanmar.info/gis/ https://gis2.onemapmyanmar.info/gis2/ https://ommgis.cde.unibe.ch/gis/</p> <p>Additional Applications https://mediawiki.myanmargis.info/wiki/Main_Page_(mediawiki) https://wiki.myanmargis.info/(dokuwiki) https://metadata.myanmargis.info/(geonetwork metadata) http://ckan.myanmargis.info/(ckan metadata) https://dev.mmlandreporting.info/(lo dev site) https://www.mmlandreporting.info/(lo prod site) https://lup.myanmargis.info/(land use planning platform)</p> <p>Filesharing NAS, CDE network drives *password protected sites</p>	<p>OneMap Datacenter Nay Pyi Taw</p> <p>ESRI Web Applications https://portal.tu.onemapmyanmar.info/ https://gis3.tu.onemapmyanmar.info/</p> <p>Additional Applications Clear OS 7 network gateway Active directory services Monitoring appliance** Data processing server Management appliance (win10mgmt)</p> <p>Filesharing NAS</p> <p>STATUS: No productive applications possible at the moment due to regular power failures Internal services possible when power issue fixed. External services currently not possible due to network limitations (bandwidth, public IP's).</p> <p>* internal service, currently stopped due to power failures ** hardware failure</p>	<p>ESRI Cloud Datacenter</p> <p>ESRI Web Applications https://unibern.maps.arcgis.com/</p>	<p>OneMap Yangon</p> <p>Filesharing NAS</p> <p>Centralized Geodatabase Server setup in progres</p>	<p>Survey Department Myanmar</p> <p>Centralized Geodatabase Server was setup for training purpose</p>	<p>External Service Providers</p> <p>Hostpoint Web: http://www.onemapmyanmar.info http://media.onemapmyanmar.info DNS server: mygis.info, myonedata.info, myonemap.info, onemapmyanmar.info Mail: @onemapmyanmar.info imap.mail.hostpoint.ch asmtmail.hostpoint.ch</p> <p>101domain DNS nameserver entries: mygis.info, myonedata.info, myonemap.info, onemapmyanmar.info</p> <p>Datacenter Services Myanmar: In evaluation</p>